



Stoma
Skin
Soul



Colostomy Irrigation

Care at Home

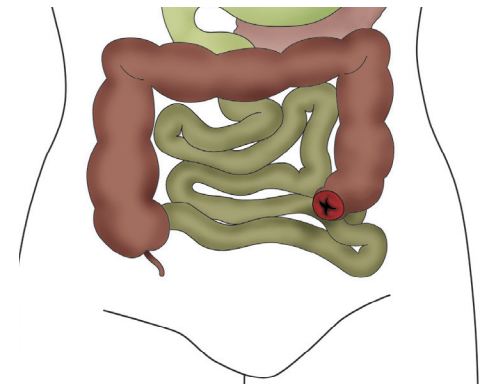
Colostomy Irrigation

Care at Home

What is Irrigation?

Irrigation is used to help regulate bowel emptying when recommended by a stoma care nurse or healthcare practitioner. They will provide the necessary information, determine if irrigation is advisable and decide when it is time to begin.

Irrigation enables many people with a colostomy to regulate their bowel function. It is suitable for sigmoid/descending colostomies. The procedure requires access to a toilet and clean water for at least one hour.



Normally, this is necessary at a consistent time every one or two days. It usually takes 2-3 weeks to establish a routine in which no stool is passing between irrigations.

The information contained in this brochure is provided as general information only and is not intended to be medical advice. Please see our website for the most up to date information, as guidance can and does sometimes change. Always follow product Instructions For Use and ask your health care professional for more information.

Colostomy Irrigation Products Contents

Irrigation Set:

- 1 Dansac toilet bag
- 2 Water container
Designed to hold water for stoma irrigation
- 3 Tubing
- 4 Cone with tubing
- 5 Cleaning brush
- 6 Pegs
- 7 1-piece system - Irrigation sleeve with adhesive skin barrier
2-piece system - Irrigation sleeve with ring holder and silicone ring
Designed to be adhered to skin around the stoma or held in place with a ring and ostomy belt to help direct stoma output into toilet
- 8 Silicone ring

Additional Products as recommended by your health care professional:

- Dansac Stoma belt
- Dansac Skin Lotion
- Dansac Skin Lotion Tissues
- Dansac Mini Cap (cut-to-fit)
- Dansac NovaLife™ closed pouch (cut-to-fit)

Irrigation Set products are made of polymer/copolymer plastics, silicone, metal. For additional products, see individual IFUs.



Indications and Intended Use

These products are intended to be used for colostomy irrigation. Irrigation is used to help regulate bowel emptying when recommended by a stoma care nurse or healthcare practitioner.

Colostomy Irrigation Step by Step

Set-up

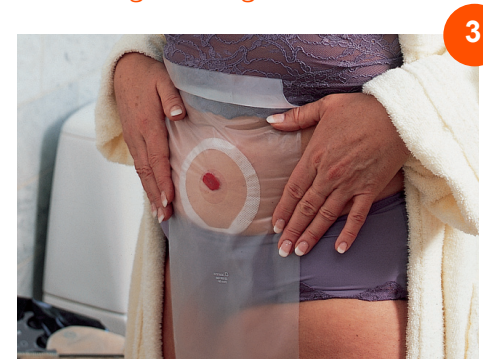


Connect the stoma cone tube with the tube from the water container by pushing them together. Ensure the flow control is closed. Fill the water container with volume of lukewarm water as directed by your stoma care nurse or healthcare professional.



Hang the water container ensuring positioned at shoulder height when seated. Open the flow control to allow water to pass through the cone, removing air from tubing. Close flow control.

Attaching the irrigation sleeve



1-piece system - Remove the protective film from the back of the adhesive barrier on the sleeve and attach the skin barrier to fit around the stoma.



2-piece system - Place the silicone ring in the ring holder of the irrigation sleeve. Attach the belt to one side of the ring holder and position the ring around the stoma. Wrap belt around body and attach belt to other side of ring. Adjust belt to make a watertight seal against the skin.



Sit on toilet or chair next to toilet placing the end of the irrigator sleeve into the toilet bowl. Gently insert cone into stoma through the top opening of the sleeve. Insertion of the cone may be eased using water or a stoma lubricant.



Open flow control, regulating the flow of water to the desired speed. Close the flow control when sufficient water has entered your colon and remove cone from stoma.



You may wish to move around as you wait for stoma to function. To do so, close both the top and bottom of the sleeve with pegs provided.



Normally, your colon will empty in 30-45 mins.¹

Colostomy Irrigation

Step by Step



Roll out the sleeve placing the lower end into the toilet to empty contents.



Once discharge from stoma is complete, remove sleeve, cleanse your stoma and skin with lukewarm water. Ensure skin around stoma is dry and then attach a new stoma pouch.



Until colostomy irrigation is well regulated, you should apply a pouch in case the stoma functions between irrigations. Once irrigation regime is established, a stoma mini cap may be worn.



Disconnect and clean all irrigation parts with water. If using the one-piece irrigation sleeve, place it in a disposal bag and follow local disposal regulations.

Irrigation Tips



- Irrigate at regular intervals.
- Create a calm and undisturbed atmosphere.
- Don't give up. Should you not be successful, try again the next day.
- Discontinue irrigation during illness or diarrhoea. You can resume when well again.
- Peg your clothing out of the way for convenience and hygiene.
- Protect trousers with a towel in the waistband.
- Place water container at shoulder height or higher.

After instilling the water, it may help to leave the cone in the stoma opening for a minute as this will help prevent water from draining out of your bowel too quickly. Alternatively you could press your fingers over the stoma opening to keep the water in for a few more minutes. This may support emptying/evacuation of stool.

In case of problems:

- Difficulties inserting the cone: try to relax, check direction of colon with fingertip.
- Discomfort or pain when inserting the water: stop water flow and gently massage abdomen. Check the water is warm, not flowing too fast and there is no air in tubing.
- If colon empties between irrigations: you may need additional time to complete your irrigation procedure successfully or you may need shorter intervals between irrigations.
- Contact your stoma care nurse if you need any help.

Travelling tips

- Always carry irrigation set, sleeves and appliances in hand luggage.
- Remember hanger or hook with adhesive to hang up water container.
- Use only safe drinking water.

Notes

Care at Home

Irrigation

Reference

1. Carmel J, Colwell J, Goldberg M (2016) Wound, Ostomy and Continence Nurses Society Core Curriculum: Ostomy Management. Wolters Kluwer Ch 12., P141-142

Warnings:

1-piece Irrigation sleeve is intended for single use only. Reuse by reprocessing, cleaning, disinfection, and sterilisation may compromise the product. All other irrigation parts are intended to be cleaned and reused as directed by stoma care nurse or healthcare professional. Peps - MR Unsafe. This device has been tested for safety in the Magnetic Resonance (MR) environment. This device is labeled MR Unsafe and should not be used in an MR environment.

Precaution:

The irrigation kit is not intended for use with a urostomy or ileostomy. Injury and/or infection may result if products are used with a urostomy or ileostomy. Patient 2-piece Irrigation Sleeve and accessories are Single patient - multiple use. Sharing the product with multiple users creates risk of infection. Rinse with clean water and leave to dry. Use the cleaning brush if appropriate (see product label). Discard when visibly damaged.

Notes:

Irrigation may not be recommended if you have any of the following conditions: current chemotherapy, radiotherapy, stoma stenosis, large parastomal hernia, stoma prolapse, Crohni's disease, or diarrhoea. Contact a stoma care nurse or healthcare professional for help with the ostomy pouching system or skin irritation. In case of serious injury (incident) in relation to your use of the product, please contact your local distributor or manufacturer, and your local competent authority. For more information, see www.dansac.com/authority or contact local distributor.

To dispose:

Please follow all local disposal regulations.
DO NOT FLUSH THE IRRIGATOR SLEEVE DOWN THE TOILET.
Medical device (as applicable)
Not made with natural rubber latex

Feeling comfortable
in your own skin

Dansac A/S

Lille Kongevej
DK-3480 Fredensborg
Danmark

Tel +45 4846 5000

Fax +45 4846 5010

www.dansac.com

 www.facebook.com/dansacostomy

Prior to use, be sure to read the Instructions for Use for information regarding Intended Use, Contraindications, Warnings, Precautions, and Instructions.

Dansac, the Dansac logo and NovaLife are trademarks of Dansac A/S. © 2021 Dansac A/S



dansac 
Dedicated to Stoma Care